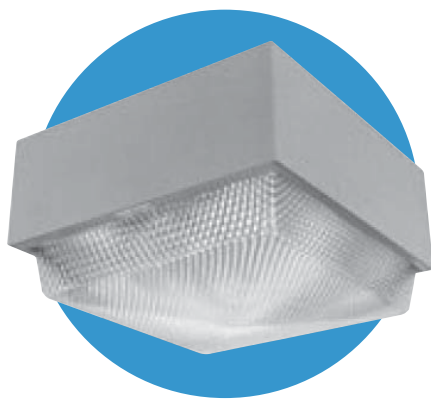


VISION

CANOPY LIGHTING



Features

- Square, formed and welded aluminum or steel housing.
- Extruded aluminum door gasketed to housing. Concealed hinge door secured with captive screw. Optional quick-release latch for ground serviceability. Drop pattern acrylic lens provides symmetric light pattern.
- Specular, anodized aluminum reflector panels for vertical lamp provide high performance. Fixture is less lamp. Add -L to include lamp.
- Ceiling mount provided with bolt and wiring holes in housing top.
- Mogul porcelain socket, pulse rated, with spring-loaded, nickel-plated center contact and reinforced lamp grip screw shell.
- CWA type ballast, HPF, starting rated at -20°F (-40°F for HPS).
- UL and CSA listed for wet locations.

Ordering Information

Example: VN - A - CM - H40 - HP - DA - Q - DB - F1

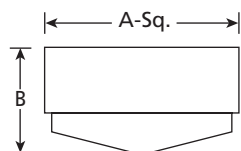
Series	Housing Material	Mount	Lamp/Watts	Orient./Dist.	Lens	Volts	Color	Options
Series VN Vision	Housing Material (Mogul Socket) A Aluminum	Mounting CM Ceiling Mount	Lamp Type/Wattage Metal Halide H25 250W (ED-28) H40 400W (ED-28) Pulse Start Metal Halide P25 250W (ED-28) P32 320W (ED-28) P35 350W (ED-28) P40 400W (ED-28)	Lamp Orientation/Distribution HP High Performance Optics (vertical)	Color DB Dark Bronze BL Black WH White GR Gray PS Platinum Silver	Options F1 Fusing - 120V F2 Fusing - 208V F3 Fusing - 240V F4 Fusing - 277V F5 Fusing - 480V F6 Fusing - 347V QR Quick Release Door (not available with DG lens) QZ Quartz RS with lamp L Lamp Included		
			Voltage Q Quad Tap® (120, 208, 240, 277V) ¹ S 480V T 120/277/347V CSA ¹					

¹ Factory wired for highest voltage unless specified.

Replacement Parts

Catalog Number	Description
5009514	Lens Door Assembly for -DA units
5009531	Lens Door Assembly for -DG units

Dimensions



A	B	Weight
21 1/8"	13"	40 lbs.
537 mm	330 mm	18.1 kg

