

# S/M SERIES

## MOTION SENSORS



## Features

- Security or welcome lighting. Sensor kits with floods or sensors only to control remote fixtures.
- Sensors are molded bronze or white non-metallic housing, ball joint and 1/2" threaded knuckle.

### S Series

- 270° detection field.
- Center focus range to 75 feet.
- Broad 20-25 ft. detection range.
- 1500 watt incandescent load capacity.
- 120 volt.60Hz.
- Time On adjustment. Manual override.
- LED-Unit in On indicator.
- Test mode.
- Sensitivity adjustment.
- UL 1598 listed for use in wet locations.

### S Series Sensor Kits

- White or bronze finish.
- Sensor above plus (2) 150 watt PAR cast aluminum lampholders and 4" round cover plate.
- Complete instructions for operation.
- UL/ULc wet location listed with lampholders aimed below horizontal.

### M Series

- 130° detection field.
- Center focus range to 40 feet.
- Broad 20 ft. detection range.
- 500 watt incandescent load capacity.
- 120 volt.60Hz.
- Time On adjustment.
- Sensitivity adjustment.
- Night/Daytime or Night operation mode.
- UL 1598 listed for use in wet locations.

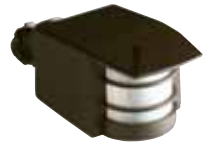
### M Series Sensor Kits

- White or bronze finish.
- Sensor above plus (2) 150 watt PAR non-metallic lampholders and 4" round non-metallic cover plate.
- Complete instructions for operation.
- UL/ULc wet location listed with lampholders aimed below horizontal.

## Ordering Information

Catalog Number	Description	Weight lbs. (kg)
<b>S Series</b>		
SO	Sensor only, 270° detection range, bronze	0.7 (.32)
SOW	Sensor only, 270° detection range, white	0.7 (.32)
S2LH	Sensor Kit, twin 150W lampholders, cover plate, bronze	1.7 (.77)
S2LH	Sensor Kit, twin 150W lampholders, cover plate, white	1.7 (.77)
<b>M Series</b>		
MO	Sensor only, 130° detection range, bronze	0.5 (.23)
MOW	Sensor only, 130° detection range, white	0.5 (.23)
M2LH	Sensor Kit, 130° detection range, twin lampholders, cover plate, bronze	1.2 (.54)
M2LHW	Sensor Kit, 130° detection range, twin lampholders, cover plate, white	1.2 (.54)

MO/MOW

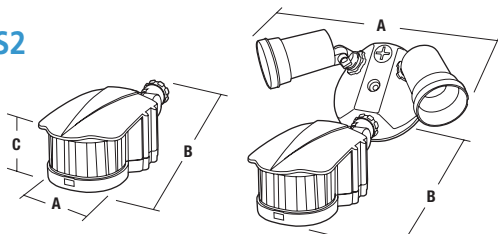


M2LH/M2LHW



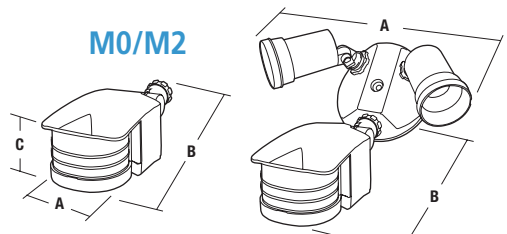
## Dimensions

SO/S2



	A	B	C
SO	3 1/2"	8"	2 5/8"
	89 mm	203 mm	67 mm
S2	10 1/2"	8 1/2"	
	267 mm	216 mm	

M0/M2



	A	B	C
M0	2 3/8"	6"	2 1/4"
	60 mm	152 mm	57 mm
M2	10 1/2"	6"	
	267 mm	152 mm	

