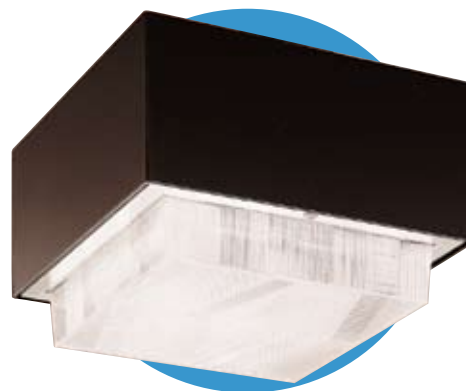


Features

- Square, formed and welded aluminum housing.
- Extruded aluminum door fully gasketed to housing. Concealed hinge door secured with captive screw. Drop prismatic acrylic or flat CT73 patterned glass lens provide symmetric light pattern.
- Semi-specular, anodized aluminum reflector for horizontal lamp. HP, high performance optics, consists of specular, anodized aluminum reflector panels.
- Ceiling mount provided with bolt and wiring holes in housing top.
- Mogul porcelain socket, pulse rated, with spring-loaded, nickel-plated center contact and reinforced lamp grip screw shell. Medium base for ED-17 lamp.
- CWA type ballast, HPF, starting rated at -20°F (-40°F for HPS).
- UL and CSA listed for wet locations.



Ordering Information

Example: HT2 - CM - H25 - HP - DA - Q - DB - F1

	Series	Mount	Lamp/ Wattage	Optics	Lens	Volts	Color	Options
Series	HT1 70-175W Medium Base							
	HT2 150-400W Mogul Base							
Mounting		CM Ceiling Mount						
			HT1 Lamp Type/Wattage					Optics
			Metal Halide					HL Standard
			H17 175W (ED-28)					HP High Performance Optics (HT2 Only)
			Pulse Start Metal Halide					Lens
			P70 70W (ED-17)					DA Drop Acrylic
			P10 100W (ED-17)					FGP Flat CT73 Glass Lens (Prismatic)
			P12 125W (ED-17)					Voltage
			P15 150W (ED-28)					Q ¹ Quad - Tap [®]
			High Pressure Sodium					5 ² 120/208/240/277V
			S70 70W (ED-23 1/2)					T ¹ 480V
			S10 100W (ED-23 1/2)					120/277/347V CSA
			S15 150W (ED-23 1/2)					Color
								DB Dark Bronze
			HT2					BL Black
			Lamp Type/Wattage					WH White
			Metal Halide					GR Gray
			H25 250W (ED-28)					PS Platinum Silver
			H40 400W (ED-37)					RD Red (Premium Color)
			Super Metal Halide					FG Forest Green (Premium Color)
			MS17 175W (ED-28)					CC Custom Color (Consult Factory)
			MS25 250W (ED-28)					Options
			MS40 400W (ED-37)					F1 Fusing - 120V
			Pulse Start Metal Halide					F2 Fusing - 208V
			P20 200W (ED-28)					F3 Fusing - 240V
			P25 250W (ED-28)					F4 Fusing - 277V
			P32 320W (ED-37)					F5 Fusing - 480V
			P35 350W (ED-37)					F6 Fusing - 347V
			P40 400W (ED-37)					QZ Quartz RS with lamp
			High Pressure Sodium					L Lamp
			S25 250W (ED-18)					
			S40 400W (ED-18)					

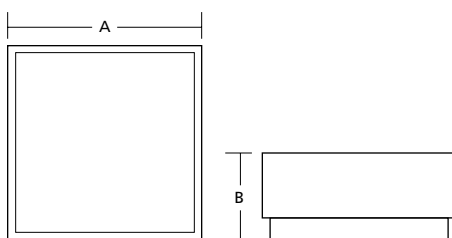
Replacement Door Assemblies

Catalog Number

HT1DOORDA
HT1DOORFGP
HT2DOORDA
HT2DOORFGP

- 1 Factory wired 277V unless specified.
- 2 480V not available with 70W or 100W Pulse Start Metal Halide.

Dimensions



	A	B	Weight
HT1	14" sq. 356 mm	8" 203 mm	20 lbs. 9.1 kg
HT2	21 1/8" sq. 537 mm	10" 254 mm	40 lbs. 18.1 kg

