

# WGC SERIES

Cat. #		Approvals
Job	Type	



### INTENDED USAGE

- Full cutoff perimeter lighting.

### CONSTRUCTION

- Rugged cast aluminum housing and door provide rigid mounting to surface
- Full cutoff distribution with factory-installed shield (Shield can be removed in the field if more forward throw is desirable)
- Tempered stippled glass lens increases distribution spread and softens lamp image
- Two sizes, Compact for 8-12' mounting heights, Mid-Size for 12-16' mounting heights
- Dark bronze powder paint finish protects surfaces and appearance

### ELECTRICAL

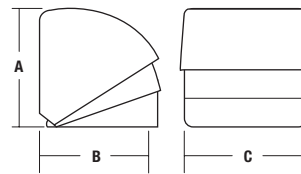
- Pulse Start, HPS, or fluorescent (mid-size only) sources available, lamp included
- CFL versions include 42w 3500K 4-Pin lamps
- MS42 unit has one lamp sensor controlled for 50% energy savings; 180° detection range; Motion control has adjustable time-on and sensitivity settings.

### LISTINGS

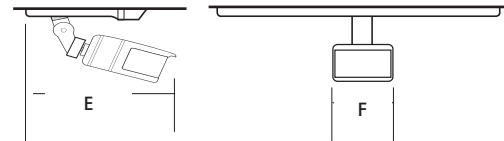
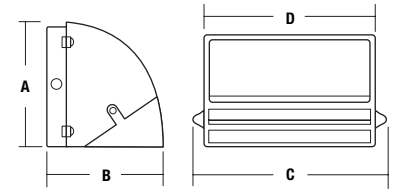
- Listed to UL1598 for use in wet locations



### COMPACT SERIES



### MID-SIZE SERIES

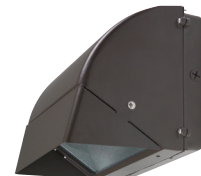


	A	B	C	D	E	F
<b>COMPACT</b>	8 <sup>13</sup> / <sub>16</sub> " 224 mm	8 <sup>7</sup> / <sub>32</sub> " 208 mm	8 <sup>3</sup> / <sub>4</sub> " 222 mm	-		
<b>MID-SIZE</b>	9 <sup>1</sup> / <sub>4</sub> " 235 mm	9 <sup>1</sup> / <sub>4</sub> " 235 mm	14 <sup>1</sup> / <sub>4</sub> " 362 mm	13" 330 mm	6.5" 165 mm	2.5" 63.5 mm

COMPACT



MID-SIZE



## ORDERING INFORMATION

Catalog Number <sup>1</sup>	Wattage/Source	Voltage	Finish	Weight
			lbs	kg
<b>COMPACT SERIES – MEDIUM BASE</b>				
<b>WGC-50H</b>	50w/PS	120, 277V	Bronze	10 4.5
<b>WGC-70H</b>	70w/PS	120, 208, 240, 277V	Bronze	11 5.0
<b>WGC-100H</b>	100w/PS	120, 208, 240, 277V	Bronze	12 5.4
<b>WGC-100S</b>	100w/HPS	120, 208, 240, 277V	Bronze	12 5.4
<b>COMPACT FLUORESCENT</b>				
<b>WGC-42F</b>	42w/CFL	120 - 277V	Bronze	8 3.2
<b>MID-SIZE SERIES – MOGUL BASE</b>				
<b>WGC-150P</b>	150w/PS	120, 208, 240, 277V	Bronze	18 8.2
<b>WGC-150S</b>	150w/HPS	120, 208, 240, 277V	Bronze	18 8.2
<b>MID-SIZE SERIES – COMPACT FLUORESCENT</b>				
<b>WGC84F<sup>2</sup></b>	2x42w/FLU	120, 208, 240, 277V	Bronze	12 5.4
<b>MID-SIZE SERIES – 50% MOTION CONTROLLED</b>				
<b>WGC-84F-MS42<sup>3</sup></b>	2x42w/CFL	120V	Bronze	12 5.4

<sup>1</sup> Lamp included on all units.

<sup>2</sup> Lamps are 3500K, 4-Pin (single, two lamp ballast)

<sup>3</sup> Lamps are 3500K, 4-Pin (two individual ballasts) can easily be wired for motion control of both lamps if desired

### ACCESSORIES - ORDER SEPARATELY

Catalog Number	Description
<b>PBT-1</b>	Button Photocontrol, 120V
<b>PBT-234</b>	Button Photocontrol, 277V

### PHOTOMETRIC REPORTS

Catalog Number	Report #
WGC100H	<b>HP10060.IES</b>
WGC100S	<b>HP10059.IES</b>
WGC150S	<b>HP10057.IES</b>
WGC84F	<b>WGC84F.IES</b>

Due to our continued efforts to improve our products, product specifications are subject to change without notice.



Motion Sensor Unit  
WGC-84F-MS42



Compact Unit with Shield  
Removed in Field



Mid-Size with Shield  
Removed in Field



Outdoor Lighting

Hubbell Outdoor Lighting • 701 Millennium Drive • Greenville, SC 29607 • PHONE: 864-678-1000

For more information visit our web site: [www.hubbelloutdoor.com](http://www.hubbelloutdoor.com)