

CEILING MOUNT

HUNTINGTON SERIES

Cat. #		Approvals
Job	Type	

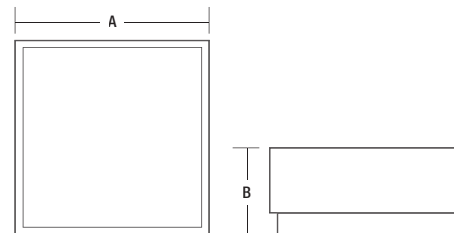
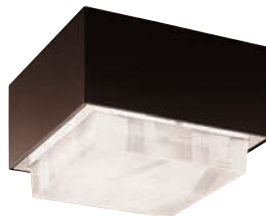


APPLICATIONS

- Canopies, parking garages, walkways, entrances, auto service departments and loading docks.

SPECIFICATIONS

- Extruded aluminum door fully gasketed to housing. Concealed hinged door secured with captive screw. Drop prismatic acrylic, or flat C-73 patterned glass lens provide symmetric light pattern.
- Square, formed and welded aluminum housing. Ceiling mount provided with bolt and wiring holes in housing top (no side knockouts available).
- Semi-specular, anodized aluminum reflector for horizontal lamp. HPO, high performance optics, consists of specular, anodized aluminum reflector panels.
- Porcelain socket, pulse rated, with spring-loaded, nickel-plated center contact and reinforced lamp grip screw shell(HTI - PS is medium base while HPS is mogul base/HTII - all mogul base). CWA type ballast, HPF, starting rated at -20°F (-40°F for HPS).
- Powder paint finish available in dark bronze, black, gray, white and platinum.



	A	B	Weight
HTI	14" sq. 356 mm sq.	8" 203 mm	20 lbs 9.1 kg
HTII	21 1/8" sq. 536 mm sq.	10" 254 mm	40 lbs 18.1 kg

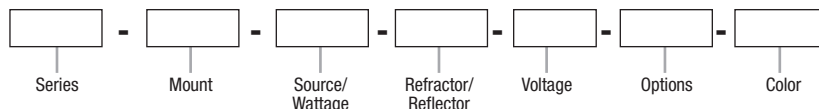
LISTINGS

- UL 1598 and CSA listed for wet locations.



ORDERING INFORMATION

ORDERING EXAMPLE: HT1-CM-P150-DA-MT-Q-DB



SERIES

HT1	70W-150W
HT2	200W-400W

MOUNT

CM	Ceiling Mount
-----------	---------------

SOURCE/WATTAGE

HT1	
PULSE START METAL HALIDE	
P70	(ED-17)
P100	(ED-17)
P125	(ED-17)
P150	(ED-17)
HIGH PRESSURE SODIUM	
S70	(ED-23 ¹ / ₂)
S100	(ED-23 ¹ / ₂)
S150	(ED-23 ¹ / ₂)

¹ Factory wired for 277V unless specified.
² Not available with 70W or 100W Pulse Start metal halide.

* IDA Dark Sky approved

SOURCE/WATTAGE Cont.

HT2	
PULSE START METAL HALIDE	
P20	(ED-28)
P25	(ED-28)
P32	(ED-37)
P35	(ED-37)
P40	(ED-37)
HIGH PRESSURE SODIUM	
S25	(ED-18)
S40	(ED-18)

OPTICS

HT1	
HL-DA	Standard optics with drop acrylic lens
HL-FGP	Standard optics with flat glass lens*
HT2	
HL-DA	Standard optics with drop acrylic lens
HL-FGP	Standard optics with flat glass lens*
HP-DA	Highperformance optics with drop acrylic lens
HP-FGP	Highperformance optics with flat glass lens*

VOLTAGE

Q¹	Quad-Tap® (120/208/240/277V)
5²	480 volt

OPTIONS

F(XXX)	Fusing (specify voltage)
QZ	Quartz Standby Time Delay (D.C. bayonet base lamp incl.)
L	Lamp Included

COLOR

DB	Dark Bronze
BL	Black
WH	White
GR	Gray
PS	Platinum

PHOTOMETRIC REPORTS

Catalog Number	Report #
HTI-MS175-DA (P150)	L3681HTC
HTI-S150-DA	L2673HTC
HTI-S150-FGP	L2055HTC
HTII-MS400-DA (P400)	L2326HTC
HTII-MS400-FGP (P400)	L3082HTC
HTII-S400-DA	L1800HTC

Due to our continued efforts to improve our products, product specifications are subject to change without notice.



Hubbell Outdoor Lighting • 701 Millennium Boulevard • Greenville, SC 29607 • PHONE: 864-678-1000
 For more information visit our web site: www.hubbell-ltg.com