

WMR/WMS

Compact Wall Sconces

WALLPACKS



WMR



WMS



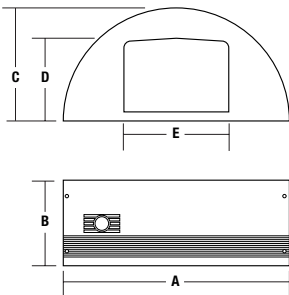
- Accent wall sconces for mounting heights of 8-12 ft
- Shipped as full cut-off downlight
 - Units have a removable internal shield that allows up/down distribution
- UV stabilized polycarbonate front is decorative yet rugged, bronze finish
- Die-cast housing provides rigid mounting and dissipates ballast/lamp heat
- Silicone gasket seals out moisture and insects
- CFL units feature 120V photocontrol for dusk to dawn energy saving control
- 70w PSMH units have Tri-Tap® ballast (120, 277, 347V) and are shipped less photocontrol; PBT-1 or PBT-234 may be field installed if photocontrol is desired
- All units include lamp(s)
- Listed to UL1598 for use in wet locations

ORDERING INFORMATION

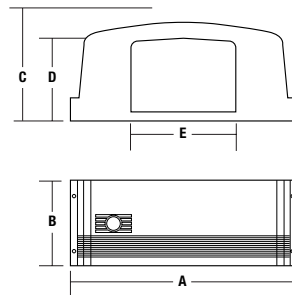
Catalog Number ¹	Shape	Wattage	Voltage	Photocontrol	Weight lbs. (kg)
WMR-213F1-PC	Radius	2X13 CFL	120	Yes	6.5 (2.9)
WMR-42F1-PC	Radius	42 CFL	120	Yes	6.0 (2.7)
WMR-70P6	Radius	70 PSMH	120, 277, 347	No	11.0 (5.0)
WMS-213F1-PC	Soft rectangle	2X13 CFL	120	Yes	6.5 (2.9)
WMS-42F1-PC	Soft rectangle	42 CFL	120	Yes	6.0 (2.7)
WMS-70P6	Soft rectangle	70 PSMH	120, 277, 347	No	11.0 (5.0)

¹ All units have molded-in dark bronze finish and include lamps; CFL 2 x 13w lamps are PLC, 42w lamp is PLT; Lamps are 3500K

WMR



WMS



	A	B	C	D	E
WMR	14.6"	5.5"	7.3"	4.8"	6.7"
	370 mm	140 mm	185 mm	121 mm	170 mm
WMS	14.6"	5.5"	6.3"	4.8"	6.7"
	370 mm	140 mm	160 mm	121 mm	170 mm



Outdoor Lighting