

Perimashield® PRS3

Polycarbonate Lens Wallpack

WALLPACKS



- One-piece polycarbonate lens, internally painted for lasting appearance; Two HubbellGard® fasteners provide weathertight seal to housing; Door hinges and is removable
- Housing is die-cast aluminum for rugged mounting and heat dissipation; 1/2" feed-through hubs provided and top photocontrol hub for field installation; Standard mount is over recessed wiring boxes
- Specular hammertone main reflector provides efficiency and uniformity
- Lamp has adjustable socket to increase source shielding if desired.; PRS is 150w max wattage is 150PSMH or 150HPS Bronze finish – 50 Hz ballast is available
- Listed to UL1598 for use in wet locations.

ORDERING INFORMATION

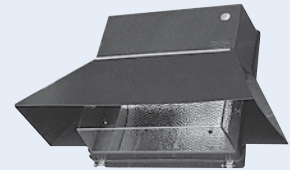
Catalog Number	Wattage	Voltage/Ballast	Weight lbs. (kg)
Pulse Start Metal Halide			
PRS3-070P-18-BZ-L	70	Quad/PSMH (HPF)	17 (7.7)
PRS3-100P-18-BZ-L	100	Quad/PSMH (HPF)	18 (8.2)
PRS3-150P-18-BZ-L	150	Quad/PSMH (HPF)	18 (8.2)
High Pressure Sodium			
PRS3-070S-18-BZ-L	70	Quad/AL (HPF)	16 (7.3)
PRS3-100S-18-BZ-L	100	Quad/AL (HPF)	17 (7.7)
PRS3-150S-18-BZ-L	150	Quad/AL (HPF)	17 (7.7)

Note: Medium base lamp included

Note: For Tri-Tap® (120/277/347V) change 8 to 6 (for Quad-Tap® ballasts, 208 & 240V not CSA)

Note: 50 Hz, 220/240V available, consult factory

PRS with PVL3V



OPTIONS - Add Suffix

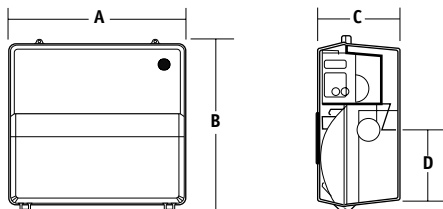
Catalog Number	Description
-EM	Double contact socket for remote power (less lamp) all units
-QSS	Quartz restrike system including relay all units (double contact bayonet socket)

ACCESSORIES - Order Separately

Catalog Number	Description
PBT-1	Photocontrol, 120V
PBT-234	Photocontrol, 208, 240, 277V
PVL3V	Full cut-off visor, formed aluminum, bronze finish

REPLACEMENT PARTS

Catalog Number	Description
200-0225-9904	Polycarbonate front, bronze



	A	B	C	D
PRS	14 7/8"	15"	8"	5 1/2"
	378 mm	381 mm	203 mm	140 mm



Outdoor Lighting