

# INSTALLATION INSTRUCTIONS FOR NRG-31X

## WARNINGS:

- Disconnect power before installing or servicing.
- Install, operate, and maintain to meet all applicable codes.
- Labeled ballast voltage must match supply voltage.
- Protect all wiring connections with approved insulators (not included).

## GENERAL INFORMATION:

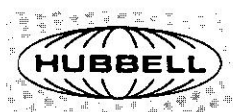
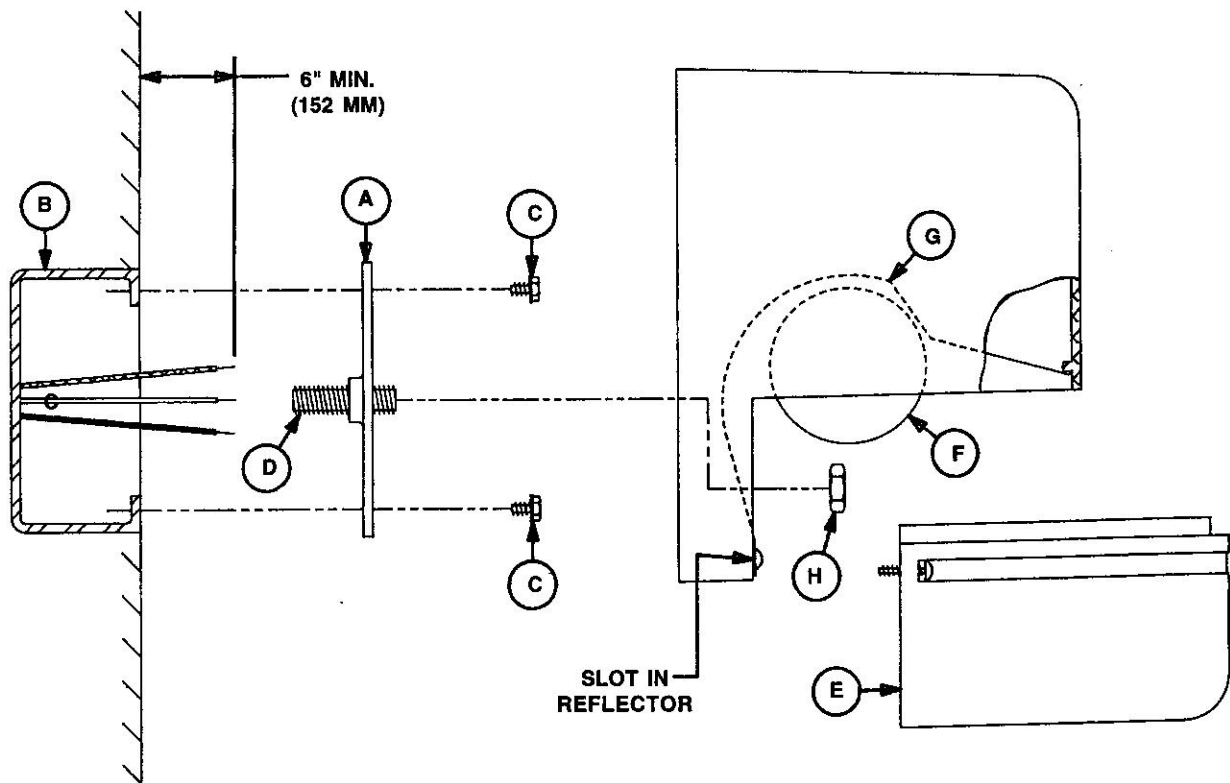
- Allow six inches minimum supply wire outside of junction box.
- For outdoor applications, provide a weather-tight seal between the luminaire housing and the mounting surface using an approved, UV stable, silicone sealer.

## MOUNTING INSTRUCTIONS:

1. Attach mounting bracket (A) to existing junction box (B) with two screws (C).
2. Install threaded pipe (D) into mounting bracket.
3. Remove lens (E), lamp (F), and reflector (G) and set aside.
4. Remove insulator from desired ballast voltage lead and connect lead to supply conductor. Place wirenut or other insulator on unused voltage lead(s).

**WARNING!** Failure to insulate unused ballast lead(s) will result in high voltage shock hazard.

5. Make remaining wiring connections in accordance with applicable codes.
6. Push wires and insulators into junction ox.
7. Attach luminaire to threaded pipe with pipe nut (H).
8. Level luminaire and tighten pipe nut. Do not pinch wires.
9. Install reflector, lamp, and lens as shown.



Hubbell Lighting, Inc.  
A Subsidiary of Hubbell Incorporated  
2000 Electric Way  
Christiansburg, VA 24073-2500  
(540) 382-6111  
FAX (540) 382-1526

268-1076-9901